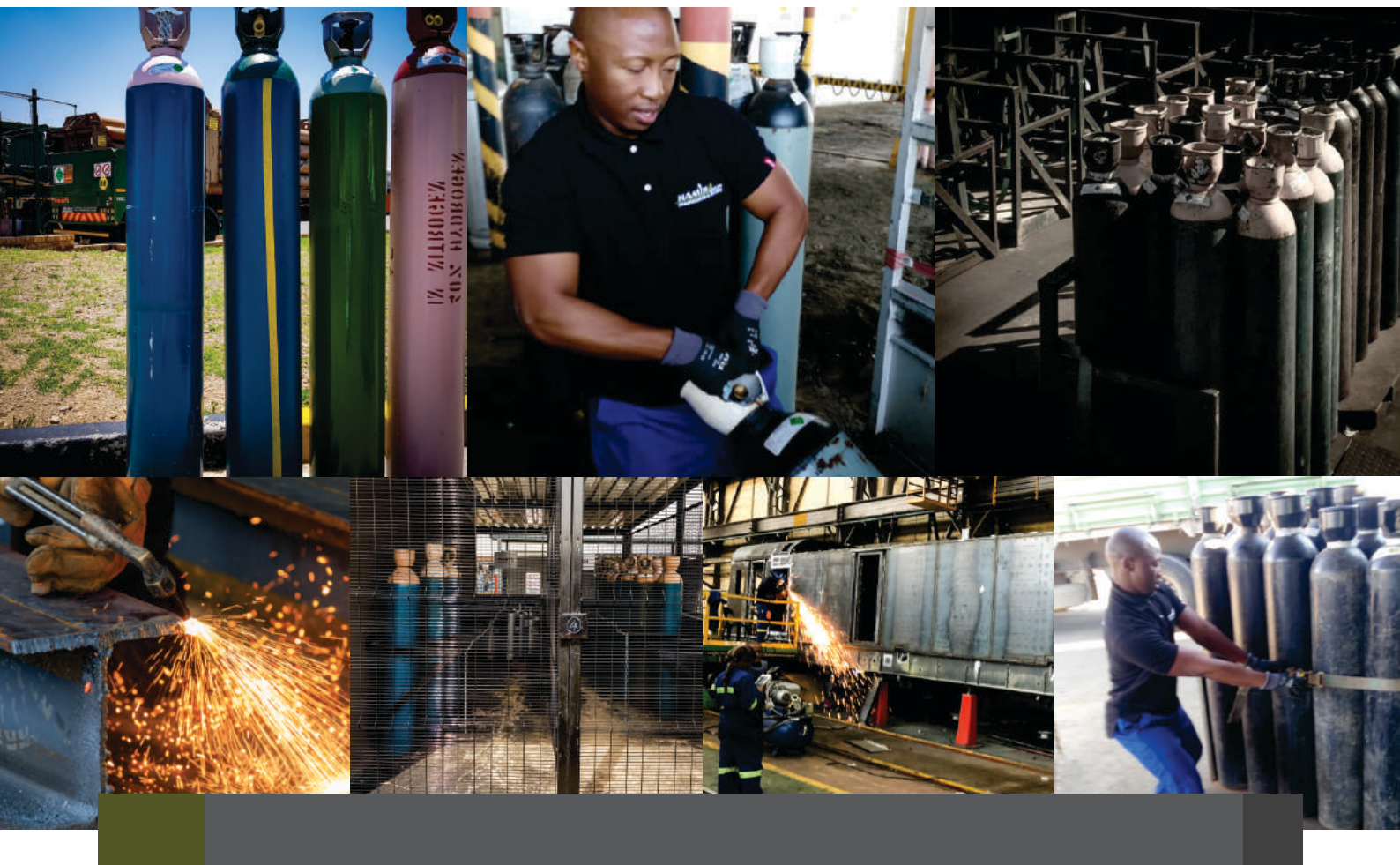


HAMISA GROUP

ENGINEERING & MINING

HAMISA GROUP



Product Catalogue



Who is Hamisa Group?

Hamisa Group is a Black Women Owned and 100% Black-Managed Level 1 BBBEE company. The Company was established in 2010 by Bongile Tsoetsi and Stephen Phalatse in Bloemfontein with the purpose of providing manufactured engineering products and services to rail, energy, industrial and mining industries. As a new industrialist in the Gas, Cutting and Welding Industry, we now supply welding, cutting, personal protective equipment, wholesale fuel and management systems, and vendor managed inventory systems. Our key thrust remains our customer-focused interaction, expertise in the market and the exceptional quality of our products.

A Strong Alliance

Hamisa has strategically aligned itself with strong key business partners. Combining the industrial and commercial skills of Air Products South Africa, Unique Welding and Hamisa makes us a formidable player in the Gas and Welding Industry.

Hamisa shareholders and executives, Stephen Phalatse and Bongile Tsoetsi, started this business 8 years ago and have built a solid experience in servicing large corporations, such as Transnet, with a multi-million Rand welding consumables supply contract.

Formidable Team

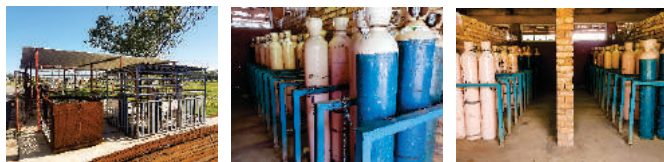
The CEO of Unique Welding, Nazmi Adams, has more than 25 years experience in the gas and welding industry. He was previously General Manager of Sales and Marketing for Afrox, an Afrox Board Member, and Global Head of the BOC Group Industrial Gases Business based in London.

Global Partners

The Air Products alliance came about as a result of Air Products' long term relationship with Unique Welding. Air Products and Chemicals employs over 20,000 employees and operates in over 30 countries worldwide. Air Products South Africa (Pty) Ltd was registered as a private South African controlled company in 1969. The Company has grown rapidly over the last 45 years. By utilising its world class production and distribution facilities, Air Products has become the largest manufacturer and supplier in the on-site and pipeline gas market, as well as a leader in the field of Bulk, Cylinder, Speciality Gas and Chemicals.

All-round Excellence

Hamisa Group Engineering & Mining brings a strong force in the industrial gas, cutting and welding market. This is a truly black-women-owned and black-women-managed company that is supported by a strong team committed to economic transformation.



Who is driving Hamisa forward?



Bongile Tsoetsi
Executive Director



Stephen Phalatse
Executive Director



Leoni Labuschagne
Director



Index

2-9	ARC Welding Machines & Accessories
6-7	Bohler
8-9	ARC & Gouging Accessories
10-15	MIG Welding Machines & Accessories
16-23	TIG Welding Machines & Accessories
19-20	Grinding Techniques/Abrasives
21	Air Products

22	Gas Cylinder Identification Chart
24-28	Gas Welding, Cutting & Heating Accessories
29-30	ESAB
31-33	Plasma Cutting Machines & Accessories
34	DeWalt Power Tools
35	Thermamax Grinding & Cutting Discs
36	PPE (Personal Protection Equipment) & Accessories



THERMAMAX

Arc

welding machines & accessories

2

MMA (Manual Metal ARC Welding Process) Stick Welding
SMAW (Stick Manual ARC Welding) Electrode Welding

THERMAMAX

Arc Machines

Full range of:
DC Inverters - 220V, 380V & 525V
AC Machines - 380V & 525V
DC Rectifiers - 380V & 525V

220V DC

TSA Inverter Series DC ARC Welding Machines
(Scratch Start TIG capable)

- 160A/220V DC Inverter
- 200A/220V DC Inverter

PRICE
LIST
PAGE
4

- 220V units fitted with VRD (Voltage Reduction Device)
- Direct current units are lightweight
- Cable kits included
- Ready for use in maintenance and semi-industrial applications
- *Non-VRD machines are also available (please see page 4 Alpha ARC Evolution 160A & 200A)*



380V & Dual Voltage 380/525V DC

TSA Inverter Series DC ARC Welding Machines
(Scratch Start TIG capable)

- 250A/380V DC Inverter
- 400A/380V DC Inverter
- 400A/380/525V DC Inverter

PRICE
LIST
PAGE
5

- VRD (Voltage Reduction Device) included
- Cable kits included
- Automatic voltage identifier (Dual voltage units)
- Heavy industrial use



380/525V AC

TSA Series AC ARC Transformer Type Air Cooled
Welding Machines

- TSA315 AC 380/525V
- TSA400 AC 380/525V
- TSA 500 AC 380/525V

PRICE
LIST
PAGE
10

- Dual voltage
- No VRD
- Cable kits are optional (not included)
- Robust copper windings
- Heavy industrial use



(MMA) (SMAW) Arc Accessories

MMA (Manual Metal ARC Welding Process) Stick Welding - SMAW (Stick Manual ARC Welding) Electrode Welding

Electrode Holders

Full range of high quality electrode holders for every application

- Jaw Type - 300A, 400A & 600A
- Collet Type - 300A, 400A & 600A
- Twist Lock Holders - 400A & 600A



PRICE
LIST
PAGE
19



Earth Clamps

With high quality brass jaws

- CROC (Crocodile Type) 400 & 600A
- G-Type Brass & Composite Steel/Brass 600A
- Booster Clamps
- G-Type Cast Iron Earth Clamp 500A



PRICE
LIST
PAGE
19

Arc Accessories (MMA) (SMAW)

MMA (Manual Metal ARC Welding Process) Stick Welding - SMAW (Stick Manual ARC Welding) Electrode Welding

THERMAMAX Secondary Cable (Welding cable)

All welding relies on a proper connection between positive & negative.
Always ensure that the correct amperage Electrode Holders & Earth Clamps are used and properly maintained.

- 16mm² Green (175A)
- 25mm² Blue (230A)
- 35mm² Grey (290A)
- 50mm² Red (370A)
- 70mm² Brown (460A)
- 95mm² Yellow (560A)
- 120mm² Black (650A)
- 150mm² Black (780A)



PRICE LIST PAGE 22

Cable Termination

A full range of Cable Lugs, Machine Sockets & Cable Connectors are available

- Suits most makes of welding machines
- In-line Cable Connectors (Cable to Cable)
- Machine Sockets & Plugs

PRICE LIST PAGE 21



PRICE LIST PAGE 19



Welder's Tools

Chipping Hammer plus a range of Wire Brushes available with mild or stainless steel bristles

- Block type Wire Brushes
- Handle type Wire Brushes

It is important to use the correct wire brush on the steel being welded to prevent contamination.
Stainless bristles for stainless steel & mild steel bristles for mild steel.



PRICE LIST PAGE 19



PRICE LIST PAGE 20



Helmets

Adjustable & Non-adjustable Welding Helmets (Solar)

TruVision™ Adjustable Solar Helmet



Passive Helmet



Lift Front Helmet



Non-Adjustable Solar Helmet



Full Leather Welding Helmet



- Lift Front Helmet
- Hand Shield
- Adjustable Solar Helmet
- Non-Adjustable Solar Helmet
- Passive Helmet
- Full Leather Welding Helmet

Hand Shield

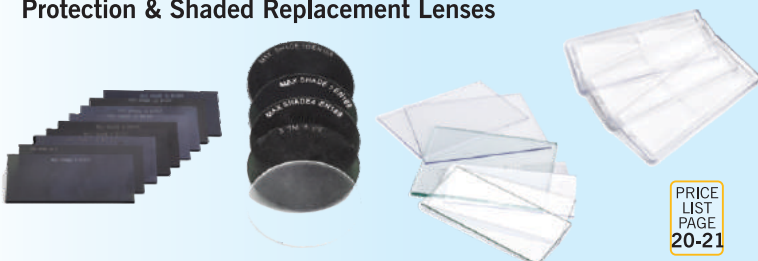


PRICE LIST PAGE 20

Suitable for welding in confined spaces where a welding helmet cannot be worn.

Lenses

Protection & Shaded Replacement Lenses



PRICE LIST PAGE 20-21

Important to remember.

- With Solar active filter lenses, please ensure that there is always a protective lens present over the solar lens. If not, spatter will damage the solar filter causing damage and will stop the lens functioning properly
- The correct shaded lens must be fitted to the helmet according to the intensity of the arc
- The minimum shade for any welding application is shade #10

Arc Accessories (MMA) (SMAW)

MMA (Manual Metal ARC Welding Process) Stick Welding - SMAW (Stick Manual ARC Welding) Electrode Welding

Welding Consumables

Thermamax offers a range of welding consumables for a wide range of applications and metal types (Mild Steel or Carbon Steel)



- **E6013 Mild Steel General Purpose**
Supercraft
Vitacraft-M
- **E7018 Low Hydrogen**
Shieldcraft 7018-1
- **E7024 Iron Powder**
Ferrospeed

PRICE
LIST
PAGE
38-39

- All electrodes are manufactured to the highest quality and specification
- Test certificates for all electrodes are available on request

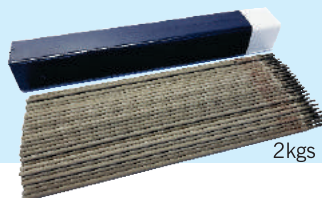


5

Stainless Steel Electrodes

We offer a range of Stainless Steel Electrodes for most grades of Stainless Steel

- E307, 308, 309, 310, 312 & 316



PRICE
LIST
PAGE
39-40

2kgs per box



Non-Ferrous Electrodes

For welding of copper and aluminium

- **MG 405 (AWS E4047-ALSi12E)** 2.5, 3.15 & 4.0mm aluminium
- **Welding of copper MG 300 3.2 & 4.0mm - MG 310 2.5, 3.2 & 4.0mm**

PRICE
LIST
PAGE
39-40



Welding of Cast Iron

Top quality electrodes for industrial applications

- **Nickel 50 AWS E NiFe-CI (55% Ni)**
- **Nickel 100 AWS E NiCI (99% Ni)**

PRICE
LIST
PAGE
40



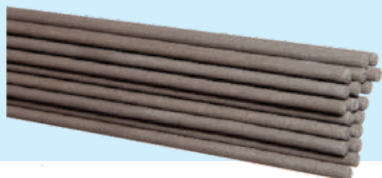
Hard Facing & Gouging Electrodes

A comprehensive range of quality electrodes for industrial applications

- **Hardcraft 55 (50-55 HRC)** 3.2, 4.0 & 5.0mm
- **Hardcraft 60 (60-62 HRC)** 3.2, 4.0 & 5.0mm

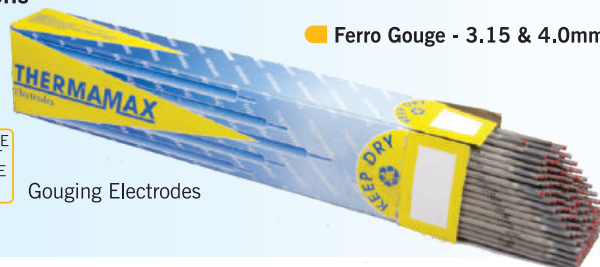
- **Ferro Gouge - 3.15 & 4.0mm**

PRICE
LIST
PAGE
40



Hard Facing Electrodes

PRICE
LIST
PAGE
39



Gouging Electrodes



Wherever and whatever you have to weld, Böhler Welding has the best stick electrode for the job. We supply any type you may need and our electrodes are always easy to handle, with fine arc ignition and stability.

Lasting Connections

BÖHLER FOX S ETI

Double Rutile Mild Steel 6013 Electrode

A double coated rutile electrode with excellent weldability

BÖHLER FOX S ETI is manufactured under the globally renowned Böhler Welding production and quality standards. As is characteristic of a double rutile electrode, BÖHLER FOX S ETI exhibits excellent weldability along with a high deposition rate.

The higher rutile content ensures that the electrode operates with a smooth arc and minimal spatter. In addition, this electrode deposits a finely rippled weld bead and is characterised by its self-detaching slag as well as its excellent re-striking properties. BÖHLER FOX S ETI is suitable for general fabrication of steels up to 420 MPa.

7

Product features

- Exceptional weldability in all positions except vertical-down.
- Self-detaching slag and extremely smooth weld beads.
- Minimal spatter and excellent welding properties in AC.
- High deposition rate.
- Excellent re-striking characteristics, consistent arc stability and easy handling.
- Versatile applications in trade and industry.

Classifications

AWS A5.1	E6013
EN ISO 2560-A	E42 0 RR 12
BÖHLER FOX S ETI Class Approval	ABS

Ø x length mm	Inner box weight kg	Outer box weight kg
------------------	------------------------	------------------------

Standard pack:

2.50 x 350	5.00	20.0
3.25 x 350	5.00	20.0
4.00 x 350	5.00	20.0

Half pack:

2.50 x 350	2.30	18.4
3.25 x 350	3.37	16.85



The Best
for the Best.

Perfect Welders.
Perfect Welds.



voestalpine

ONE STEP AHEAD.

Arc Accessories (MMA) (SMAW)

MMA (Manual Metal ARC Welding Process) Stick Welding - SMAW (Stick Manual ARC Welding) Electrode Welding

Baking & Holding Ovens (Hot Boxes)

A full range of Spares are available. Calibration done in-house.



60V Hot Box ($\pm 150^{\circ}\text{C}$)

PRICE
LIST
PAGE
15



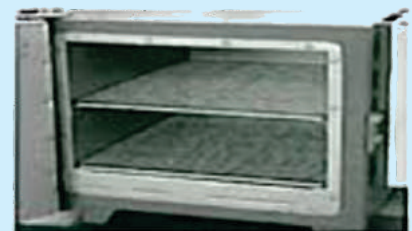
TSA 10-200 Portable Electrode Oven ($\pm 240^{\circ}\text{C}$)

PRICE
LIST
PAGE
15

220V Holding Oven TSA 50/300 ($\pm 250^{\circ}\text{C}$)
Calibrated to 120°C



220V Baking Oven TSA 50/500 ($\pm 500^{\circ}\text{C}$)
Calibrated to 400°C



PRICE
LIST
PAGE
15

8

Engine Driven Welder/Generator Sets

Quality, engine driven Generator/Welders



PRICE
LIST
PAGE
13

TA8/300 i-KA



TSA TA 20/500 D2

TA8-300 Generator/Welder

TSA TA 20/500 D2 Generator/Welder



Dual Voltage (DC Rectifiers)

TSA Series DC ARC Welder
TSA Gouge 1250DC Thysister Control

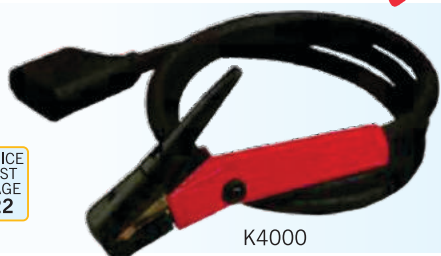
- DC 400 - 380/525V
- DC 630 - 380/525V
- DC 1250 - 380V
- DC 2000 - 380V

PRICE
LIST
PAGE
9

- Dual voltage machine, factory setup to 525V
- Copper transformer
- Heavy industrial use
- Cable kits are optional (not included)
- Machines are capable of MMA welding and Carbon ARC Gouging
- Recommended that the TSA630, TSA1250 or TSA2000 be used

9

Arcair® Gouging Torches



K4000

- K4 Gouging Torch 1000A
- K5 Gouging Torch 1200A

• Spare parts are available for all torches
(see price list page 22)



K5

PRICE
LIST
PAGE
22

PRICE
LIST
PAGE
23

TriArc® Foundry Torch



2200A

- Tri-ARC Foundry Torch 1/2" (13mm)
- Tri-ARC Foundry Torch 5/8" (16mm)
- Tri-ARC Foundry Torch 3/4" (19mm)

• Spare parts are available (see price list page 23)

PRICE
LIST
PAGE
23

Taimatsu (Previously Kadomax)

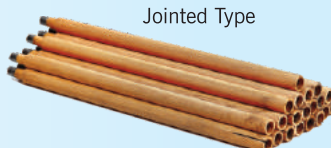
Gouging Carbons

A full range of high quality Gouging Carbons



Non-Jointed Type

- 5.0 x 305mm - 14-051105-71
- 6.5 x 305mm - 14-051106-71



Jointed Type

- 9.5 x 355mm - 14-051209-71
- 13.0 x 355mm - 14-051213-71

PRICE
LIST
PAGE
23



THERMAMAX® Gouging Carbons

We also supply a range of Thermamax non-jointed Carbons

- 5.0 x 305mm - 14-052105-71
- 6.5 x 305mm - 14-052106-71



Non-Jointed Type

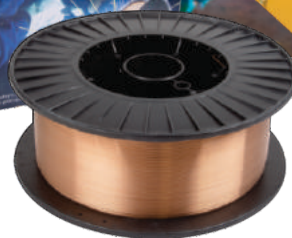
PRICE
LIST
PAGE
24

THERMAMAX® **Mig**

welding machines & accessories

10

GMAW (Gas Metal ARC Welding - MIG/MAG
(Metal Inert/Active Gas Welding) - Co2 Welding



THERMAMAX® Mig/Mag Machines



220V Multi-Process Machine

MIG Flux Cored/ARC/TIG Welder - TSM-A 160i

■ MIG 160-i/220V - 21-110116-11

PRICE
LIST
PAGE
7



220V CV Machine

TSM Inverter Series Semi-Automatic MIG
Welding Machine

■ TSM 201A/220V - 21-210120-11
■ TSM 251A/220V - 21-210125-11

PRICE
LIST
PAGE
7

DC Semi-Auto Rectifier Machines (Aluminium Winding)

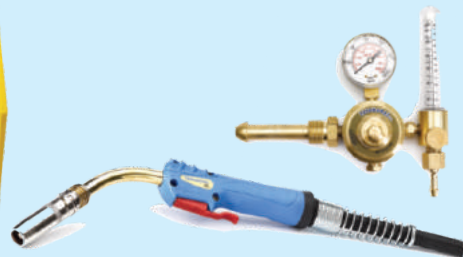
TSM 300-AL

PRICE
LIST
PAGE
7

TSM 350SF-AL

TSM 500SF-AL

- All Thermamax Flow Meter and Thermamax Torc machines supplied with



11

DC Semi-Auto Rectifier Machines (Copper Winding)

TSM 300

PRICE
LIST
PAGE
8

TSM 350SF

TSM 500SF

- Copper coil machines available with Thermamax kit or Tweco kit.



Multi-process semi-automatic machines CV (Constant Voltage) CC (Constant Current)

- Can be used for both MIG/MAG welding and ARC MMA welding

TSM 350A CC/CV

PRICE
LIST
PAGE
9

TSM 600SF CC/CV

PRICE
LIST
PAGE
9



Cable Kit Supplied



Cable Kit Supplied

Mig Accessories

Water Circulators

High performance Water Circulators

TSW Water Circulator 220V - 7 Litre

- Size - 300 x 392 x 580mm
- Flow rate 18l/min

TSW Water Circulator 220V - 20 Litre

- Size - 485 x 445 x 530mm
- Flow rate 18l/min

PRICE
LIST
PAGE
6

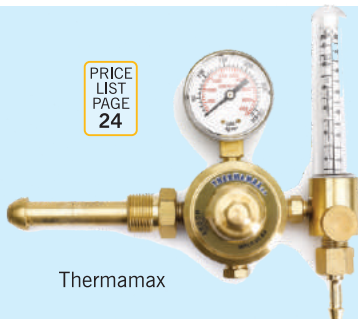


12

Argon Flow Meters

Both Thermamax & Victor Flow Meters are available

PRICE
LIST
PAGE
24



Thermamax

PRICE
LIST
PAGE
29



Victor

- Thermamax Flow Meter
- Victor Flow Meter



Mig Torches & Spares

We stock a full range of Thermamax Trafimet torches and spares manufactured in Italy and a full range of genuine Tweco torches and spares manufactured in America.

Our Service Department is geared to repair and do maintenance on all types of MIG torches.

BNZ Style MIG Torches

We stock 5 Thermamax/Trafimet Torches

- 15 x 4m Torch
- 25 x 4m Torch
- 36 x 4m Torch
- 40 x 4m Torch
- 500 x 4m Water Cooled Torch

PRICE
LIST
PAGE
35



Trafimet Torches
Exclusive to Thermamax

Ergoplus 15



Ergoplus 36



Ergoplus 500



Full range of:
Goose Necks
Gas Diffusers
Tip Holders

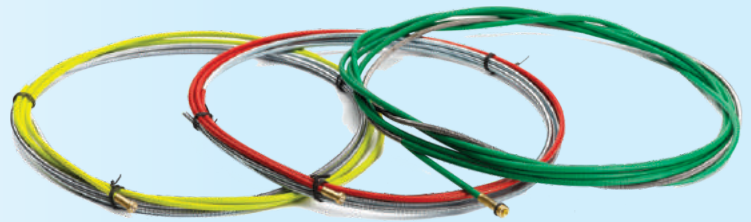
Contact Tips
Nozzles (Shrouds)

Liners

Both Steel & Teflon

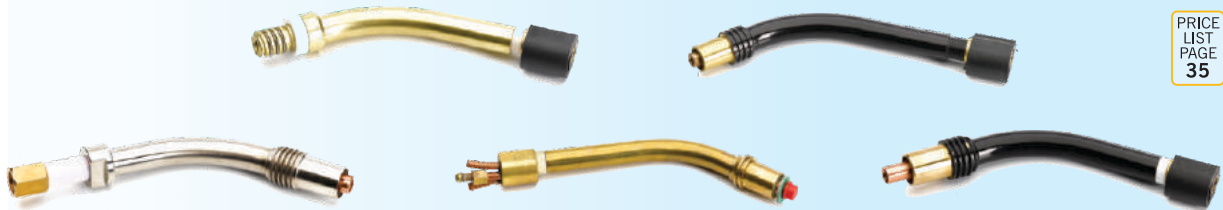
- Bare Steel Liners for Water Cooled Torches
- Teflon Liners for aluminium welding
- Carbon Teflon Liners for stainless steel welding
- PVC coated Liners for Mild & Carbon Steel welding

PRICE
LIST
PAGE
37



Conductor Tubes (Goose Necks)

13



PRICE
LIST
PAGE
35

Gas Diffusers

PRICE
LIST
PAGE
36



Tip Holders (Adaptors)

PRICE
LIST
PAGE
36



Contact Tips

PRICE
LIST
PAGE
36



Nozzles (Shrouds)

PRICE
LIST
PAGE
36



All these parts are Binzel Style and compatible with Binzel Torches



Tweco MIG Guns

Extra heavy duty MIG/MAG Torches

We stock a full range of original Tweco No.4 & No.5 Torches plus spares

PRICE
LIST
PAGE
33

- No.4 MIG-Gun 400A Air Cooled
- No.5 MIG-Gun 500A Air Cooled



Mig Consumables



5kg Spools available



Bulk Drum 250kg available

MIG Wire (Consumable)

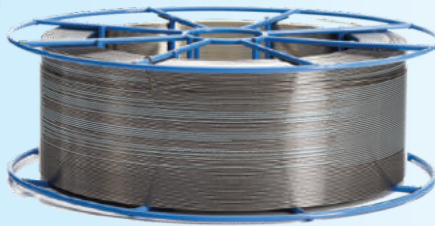
- Layer wound
- Copper coated
- Specifications/Approvals:
 - Lloyds Register of Shipping Grade DXVud,BF,2S,2YS,H15
 - American Bureau of Shipping Grade 2SA
 - TÜV

Non-Branded "White Box" available.

Wire	m/kg Aluminium	m/kg Copper	m/kg Brass	m/kg C-HN/Stainless Steel
0.8mm	712.3	211.1	219.7	245.4
0.9mm	567.8	168.2	175.1	185.7
1.0mm	455.1	134.8	140.4	158.5
1.2mm	315.8	93.6	97.4	109.4
1.6mm	186.8	55.3	57.6	63.1



14



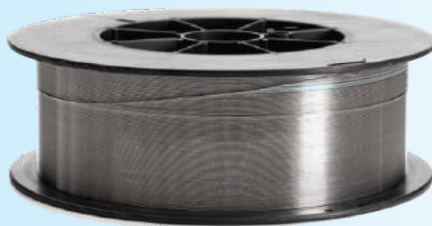
MIG Wire (Stainless Steel)

Most grades of Stainless Steel MIG Wire are covered by the Thermamax range

307, 308, 309, 310, 312 & 316

Duplex Stainless MIG Wire available on request

PRICE LIST PAGE 41



MIG Wire (Aluminium)

Aluminium MIG Wire in stock

4043 5% Si & 5356 5% Mg
0.8mm, 0.9mm, 1.0mm, 1.2mm & 1.6mm

PRICE LIST PAGE 41

MIG Wire (Non-Ferrous)

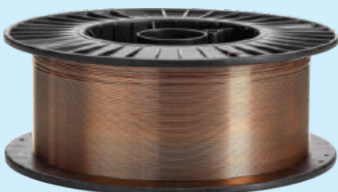
Suitable for Copper & Brass

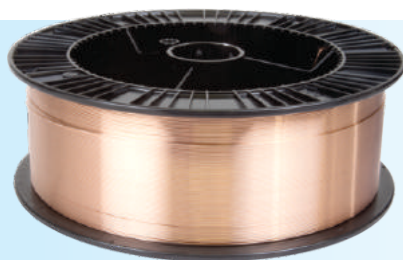
MIG Wire is available for:

- Tin Bronze
- Silicon Bronze
- Alum Bronze
- Copper

Cast Iron MIG Wire available on request

PRICE LIST PAGE 42





MIG Wire (High Tensile)

- GTI 1.0mm AWS ER 100 S-G
- GTI 1.2mm AWS ER 100 S-G
- GTI 1.6mm AWS ER 100 S-G

PRICE
LIST
PAGE
41

15



MIG Wire (Hard Facing)

Full range of Hard Facing MIG wires available for both abrasion and impact resistance



Distributors of quality, locally manufactured Hard Facing products.

Submerged ARC Welder



Armada Series 1250K

- TSM 1250 Submerged ARC Rectifier Complete 1250A - 380V

PRICE
LIST
PAGE
9

Sub-ARC MIG Wire and Flux available on request





THERMAMAX®

Tig

welding machines & accessories

16

GTAW (Gas Tungsten ARC Welding - TIG
(Tungsten Inert Gas) - Argon ARC Welding



THERMAMAX®

Tig Machines

DC Inverters can be used for scratch start TIG welding on mild steel.
A 26V TIG Torch (not supplied) will be required in addition to an Argon Flow Meter.

VRD Unit



220V DC

TSA Inverter Series DC ARC Welding Machines
(Stick plus Scratch Start TIG)

200A/220V DC Inverter

PRICE
LIST
PAGE
4

- Scratch start TIG welding (mild steel & carbon steel only)
- Cable kits included (MMA)
- Ready for use in maintenance and semi-industrial applications
- TIG accessories not included

Non VRD Unit (Voltage Reduction Device)

TIG Welders, High Frequency (With or without Pulse feature)

GTAW DC TIG Inverter Kits Complete with all Accessories

PRICE
LIST
PAGE
5

PRICE
LIST
PAGE
5

17



- 160A/220V TST DC TIG 160S Inverter with High Frequency + Kit
- 200A/220V TST DC TIG 200S Inverter with High Frequency + Kit
- 160A/220V TST DC TIG 160i Inverter with High Frequency & Pulse + Kit
- 200A/220V TST DC TIG 200i Inverter with High Frequency & Pulse + Kit

For TIG Tungstens please see page 17



AC/DC Inverter Series

For TIG welding of aluminium, stainless steel & carbon steel

AC/DC TIG Machines Complete with TIG Torch.
Foot Remote & Flow Meter

- TST200 AC/DC 220V
- TST315 AC/DC 380V

PRICE
LIST
PAGE
6

TST 315 AC/DC to be used with Water Cooler.
Please see page 6



Tig Torches & Accessories

PRICE LIST
PAGE
31



26V TIG Torch

26V TIG Torch

SR18 Water Cooled TIG Torch for use on TST250/315 AC/DC

Weldamax offer 3 different TIG Torches
WP17 - 150A rated 100% duty cycle
WP26 - 200A rated 100% duty cycle
WP18 - 300A Water Cooled 60% duty cycle

The WP17 is available Valved only
The WP26 comes in both Valved & Trigger versions
The WP18 is available with Trigger only

PRICE LIST
PAGE
31



SR18 TIG Torch

PRICE LIST
PAGE
24



ArR-160 Phoenix Range
Argon Flowmeter



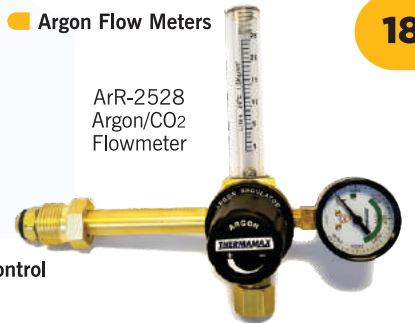
PRICE LIST
PAGE
6



TST Foot Remote Control

Argon Flow Meters

ArR-2528
Argon/CO2
Flowmeter



18

Torch Accessories

Collets: 1.0, 1.6, 2.4, 3.2 & 4.0mm



PRICE LIST
PAGE
31-32

Collets Bodies: 1.0, 1.6, 2.4, 3.2 & 4.0mm



PRICE LIST
PAGE
32

Alumina Ceramics: No.4, 5, 6, 7, 8 & 10



PRICE LIST
PAGE
32

Gas Lens Collet Body Medium

Gas Lens Aluminas Medium



PRICE LIST
PAGE
32

Stubby Alumina Stubby Collet Body Stubby Collet



PRICE LIST
PAGE
32

VS2 Valve Stem 17

VS2 Valve Stem 26



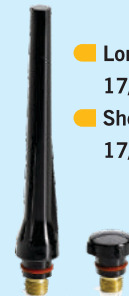
PRICE LIST
PAGE
31

Long Back Cap

17/26/18

Short Back Cap

17/26/18



PRICE LIST
PAGE
32

Torch Spares

Weldamax also stock a complete range of spares for all of our TIG Torches

Torch Bodies



PRICE LIST
PAGE
31

Torch Handles



PRICE LIST
PAGE
31

Trigger Switch + Cable



PRICE LIST
PAGE
31

Clip Boot 17 & 26



PRICE LIST
PAGE
31

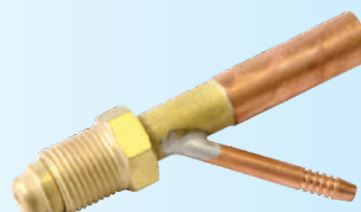
Braided Hose

PRICE LIST
PAGE
31



Power Cable Connector

PRICE LIST
PAGE
31









Manufacturers & Suppliers of **SUPERIOR QUALITY ABRASIVES**






19







SLIMLINE CUTTING - PORTABLE MACHINES

MILD STEEL STAINLESS STEEL INDUSTRIAL	MILD STEEL STAINLESS STEEL PROFESSIONAL	ALUMINIUM	STONE NON-FERROUS
			
Dimensions DxTxH (mm)	Dimensions DxTxH (mm)	Dimensions DxTxH (mm)	Dimensions DxTxH (mm)
100x1.0x16.0	100x1.0x16.0	115x1.0x22.23	115x1.0x22.23
100x1.6x16.0	115x1.0x22.23	125x1.0x22.23	125x1.0x22.23
115x1.0x22.23	125x1.0x22.23	230x1.9x22.23	230x1.9x22.23
115x1.6x22.23	150x1.2x22.23		
125x1.0x22.23	180x1.6x22.23		
125x1.6x22.23	230x1.9x22.23		
150x1.6x22.23			
180x1.6x22.23			
230x1.9x22.23			
230x2.2x22.23			
1A46T BF	A60V BF A46V BF	A46 ALU BF A60 ALU BF	C60T BF C46T BF






CONVENTIONAL CUTTING - PORTABLE MACHINES

MILD STEEL INDUSTRIAL	MILD STEEL PROFESSIONAL	STAINLESS STEEL	ALUMINIUM	STONE NON-FERROUS
				
Dimensions DxTxH (mm)	Dimensions DxTxH (mm)	Dimensions DxTxH (mm)	Dimensions DxTxH (mm)	Dimensions DxTxH (mm)
80x2.0x9.53	100x2.5x16.0	100x2.4x16.0	115x2.5x22.23	100x2.5x16.0
80x3.2x9.53	115x2.5x22.23	115x2.4x22.23	125x2.5x22.23	115x3.0x22.23
100x2.5x16.0	115x3.2x22.23	125x2.4x22.23	180x2.5x22.23	125x3.0x22.23
115x3.0x22.23	125x2.5x22.23	150x2.5x22.23	230x2.5x22.23	150x3.0x22.23
125x3.0x22.23	125x3.2x22.23	180x2.5x22.23		180x3.0x22.23
150x3.0x22.23	150x3.0x22.23	230x2.5x22.23		230x3.0x22.23
180x3.0x22.23	180x3.0x22.23	230x3.0x22.23		
230x3.0x22.23	230x3.0x22.23	230x3.2x22.23		
AS30S B27 F2	AS30S B26 F2	AS24S BF INOX ULTRA	A36 ALU BF	CS30S B40 F2






CONVENTIONAL CUTTING - STATIONARY MACHINES

MILD STEEL INDUSTRIAL	MILD STEEL PROFESSIONAL	STAINLESS STEEL	STONE NON-FERROUS
			
Dimensions DxTxH (mm)	Dimensions DxTxH (mm)	Dimensions DxTxH (mm)	Dimensions DxTxH (mm)
300x2.8x25.4	300x3.5x40.0	300x3.4x25.4	300x3.0x25.4
350x3.0x25.4	350x3.5x40.0	350x3.4x25.4	300x3.0x40.0
400x3.2x25.4	400x4.0x40.0	400x4.0x25.4	350x3.0x25.4
	450x4.2x40.0	400x4.0x40.0	350x3.5x40.0
	500x4.2x40.0	500x5.2x40.0	400x3.5x25.4
	500x5.2x40.0		400x4.5x40.0
AS30R BF2E	AS24R BF A30Q BF 2E	A30 O BF INOX ULTRA	CS24R BF50

ANGLE GRINDING - PORTABLE MACHINES

MILD STEEL INDUSTRIAL	MILD STEEL PROFESSIONAL	STAINLESS STEEL	ALUMINIUM	STONE NON-FERROUS
				
Dimensions DxTxH (mm)	Dimensions DxTxH (mm)	Dimensions DxTxH (mm)	Dimensions DxTxH (mm)	Dimensions DxTxH (mm)
80x6.0x9.53	100x4.5x16.0	100x6.0x16.0	115x7.0x22.23	100x6.0x16.0
100x4.5x16.0	100x6.8x16.0	115x6.0x22.23	180x7.0x22.23	115x6.4x22.23
100x6.0x16.0	115x4.5x22.23	125x6.0x22.23	230x7.0x22.23	180x6.0x22.23
115x4.5x22.23	115x6.8x22.23	150x6.5x22.23		230x4.5x22.23
115x6.5x22.23	125x4.5x22.23	180x7.0x22.23		230x6.0x22.23
125x4.5x22.23	125x6.8x22.23	230x4.1x22.23		
125x6.5x22.23	150x6.8x22.23	230x5.2x22.23		
150x6.5x22.23	180x7.2x22.23	230x7.0x22.23		
180x4.5x22.23	180x8.0x22.23			
180x6.8x22.23	230x7.2x22.23			
230x4.5x22.23	230x8.0x22.23			
230x6.8x22.23				
230x7.2x22.23				
AS24/30T BF28	AS30R BF32	AS24R BF INOX ULTRA	A24 ALU BF	CS24T BF1

FLAPDISCS - TYPE 27, 29 GRITS P40, P60, P80, P120 - **SIZES:** 100x16, 115x22, 125x22, 150x22, 180x22

PREMIUM INOX	PREMIUM NON-FERROUS	PROFESSIONAL STEEL / INOX	INDUSTRIAL STEEL / INOX	EVOLUTION STEEL / INOX
				
Abrasive Material	Abrasive Material	Abrasive Material	Abrasive Material	Abrasive Material
CA	CA	AZ	AZ	AZ

A man in a dark suit and white shirt is pulling open his shirt with both hands, revealing a bright green superhero-style chest. The text "Service that delivers the Difference" is overlaid on the green area.

Service that delivers the Difference

Air Products South Africa (Pty) Limited manufactures, supplies and distributes a diverse portfolio of atmospheric gases, specialty gases, performance materials, equipment and services to the Southern African region.

Air Products touches the lives of consumers in positive ways every day, and serves customers across a wide range of industries from food and beverage, mining and petrochemicals, primary metal and steel manufacturers, chemical applications, welding and cutting applications to laboratory applications.

Founded in 1969, Air Products South Africa has built a reputation for its innovative culture, operational excellence and commitment to safety, quality and the environment. In addition the company aims to continue its growth and market leadership position in the Southern African region.

Air Products is a proud supplier of Industrial & Specialty Gases to our accredited distributor Unique Welding Alloys.

**TIG, MIG &
PLASMA GASES**



ARGON



ARGON
5.0



ASTEC S3, S2



HYTEC 5, 35



SYNTHETIC AIR
INSTRUMENT/HP

**FLUXCORED &
METALCORED
GASES**



FLUX BLEND
AND ULTRA BLEND

**STANDARD MAG
GASES**

Coogar gas range offers excellent weld quality. These batch certified blends are pressurised at 200 Bar



COOGAR PLUS



COOGAR SP5
Light



MAGMIX 3



COOGAR 89



COOGAR 84



COOGAR 82



CARBON DIOXIDE

**STANDARD GAS
FOR S/STEEL
MAG WELDING**



COOGAR SP



COOGAR 98



ASTEC

**PURGING, FORMING
& INERTING GASES**



PROTEC



NITROGEN



CARBON DIOXIDE
DIP TUBE



NITROGEN
5.0

**FLAME CUTTING
PROCESS GASES**



ACETYLENE



OXYGEN



KWICUT



KWICUT DIP TUBE



LIQUID PETROLEUM
GAS - LPG



LIQUID PETROLEUM
GAS - LPG

DISCLAIMER

The company accepts no responsibility for any errors or omissions. The contents of this chart are for indication purposes only. Decals provided on the cylinders to be used as the primary method of identification.

Material Safety Data Sheets are available on request or they can be downloaded from Air Products website:
www.airproducts.com/msds or
www.airproducts.co.za/msds

LEGEND

TIG - Tungsten Inert Gas
MIG - Metal Inert Gas
MAG - Metal Active Gas
S/STEEL - Stainless Steel

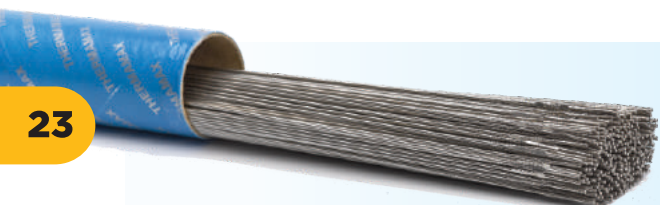
Fabrication
Light: 1-8mm
Medium: 8-15mm
Heavy: 15mm plus



PRICE
LIST
PAGE
38

Carbon Steel

- 70-S6 Carbon Steel 1.6mm
- 70-S6 Carbon Steel 2.0mm
- 70-S6 Carbon Steel 2.4mm

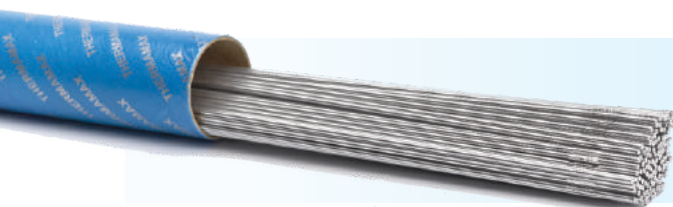


23

PRICE
LIST
PAGE
41

Stainless Steel

- 308L - 1.6mm, 2.4mm & 3.2mm
- 309L - 1.6mm 2.4mm
- 316L - 1.6mm, 2.4mm & 3.2mm



PRICE
LIST
PAGE
42

Aluminium

- 4043 - 1.6mm, 2.4mm & 3.2mm
- 4047 - 1.6mm, 2.4mm & 3.2mm
- 5356 - 1.6mm, 2.4mm & 3.2mm



PRICE
LIST
PAGE
42

Copper & Bronze

- Tin Bronze - 2.4mm & 3.0mm
- Silicon Bronze - 2.4mm & 3.0mm
- Aluminium Bronze - 2.4mm & 3.0mm
- Copper - 2.4mm

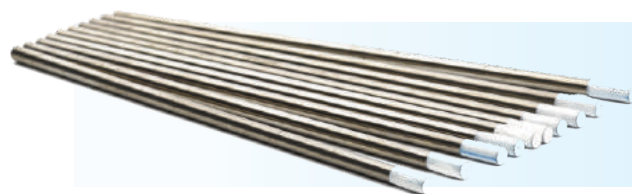


PRICE
LIST
PAGE
32

Tungstens

2% Thoriated Tungstens for use on Stainless Steel & Mild Steel (to be sharpened)

- 1.0mm, 1.6mm, 2.4mm, 3.2mm, 4.0mm & 4.8mm



PRICE
LIST
PAGE
32

Tungstens

Zirconiated Tungstens for use on Aluminium (NOT to be sharpened)

- 1.6mm, 2.4mm, 3.2mm, 4.0mm & 4.8mm

ALWAYS MAKE SURE THAT THE CORRECT GAS IS USED FOR THE METAL TYPE THAT IS BEING WELDED



Gas Type	Process	APSAP
Argon	Mild, Low & High Alloy Steels Thin Copper, Stainless Steel & Aluminium (Al <1mm to >7mm)	Ar / Spec or UHP
Ar/He	Aluminium 8mm & above (Preheat Required)	Astec 30
Ar/He	Copper >4mm+	Astec 25'
Helium	DCEN	99.9999>%

THERMAMAX[®] Gas

welding, cutting & heating
accessories

24

GW (Gas Welding, Brazing, Cutting & Heating)

Phoenix
RANGE



Gas Regulators

Full Range of Cylinder Regulators

Single Stage Phoenix Regulators



PRICE
LIST
PAGE
24

- OR-160 Heavy Duty Oxygen Regulator (Single Stage)
- LR-160 LPG Regulator (Single Stage)
- AR-160 Heavy Duty Regulator (Single Stage)

Gaugeless Single Stage Regs

PRICE
LIST
PAGE
24



- TSG Regulator - Oxygen Gaugeless (Single Stage)
- TSG Regulator - Acetylene Gaugeless (Single Stage)

Multi-Stage Regs

- TSG Regulator - Oxygen (Multi-Stage)
- TSG Regulator - Acetylene (Multi-Stage)



PRICE
LIST
PAGE
24



Spare Gauges are available



PRICE
LIST
PAGE
29/30



25

Flowmeter & Heater



PRICE
LIST
PAGE
24



- ArR-160 Phoenix Range Argon Flowmeter
- TSG Heater - For Flow Meter Regulator (220V)

LPG Natural Gas Regs



PRICE
LIST
PAGE
28

- TSG Regulator - High Pressure With Gauge (40 Bar Inlet - 4 Bar Outlet)
- TSG Regulator - High Pressure 0-30 PSI (Red Devil)
- TSG Regulator - Low Pressure 0-15 PSI

Gas Hose

PRICE
LIST
PAGE
27



- Gas Hose is available in 6.3, 8.0 & 10.0mm
- Clear PVC Reinforced Hose for compressed air is available in 8.0mm



Hose Clamps

- Two Ear



- Parallel



PRICE
LIST
PAGE
21

Flashback Arrestors



- Available in both 9/16" for Victor & Harris products & 3/8" for Afrox BOC products
- Enquire about our new range of WITT Torch- and Regulator-Mounted Flashback Arrestors for Oxygen and Acetylene applications

PRICE
LIST
PAGE
26

'Y' Pieces



- TSG Valve - "Y" Piece RH Thread (Oxy) (Double Outlet)
- TSG Valve - "Y" Piece LH Thread (Acet) (Double Outlet)

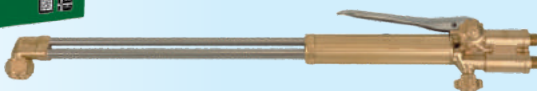
PRICE
LIST
PAGE
24

VICTOR® Cutting Torches

Professional

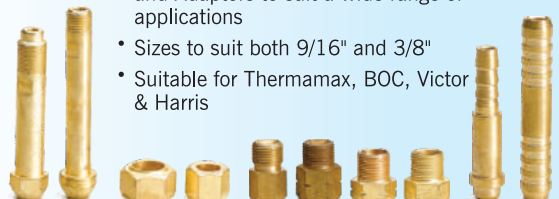


- Complete range of Victor Professional Gas Equipment in stock



Brass Fittings & Adaptors

- Thermamax offer a complete range of Brass Fittings and Adaptors to suit a wide range of applications
- Sizes to suit both 9/16" and 3/8"
- Suitable for Thermamax, BOC, Victor & Harris



PRICE
LIST
PAGE
27/28

THERMAMAX® Gas Torches & Nozzles

LPG Heating



OXY/LPG Heating



26

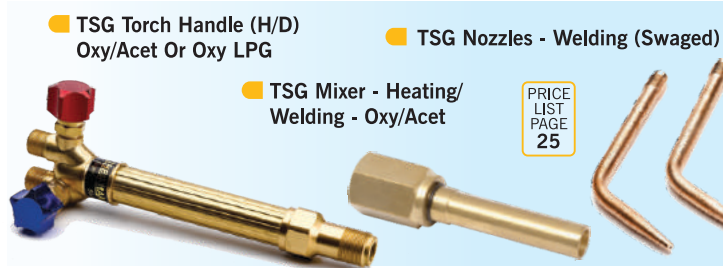
OXY/Acetylene Heating



Air/LPG Heating



Brazing Torch



Cutting Torches



ANM Cutting Nozzles

■ ANM & ANME - O₂ & Da (Acet) 1 Piece



PNM Cutting Nozzles

■ PNM & PNME - O₂ & Propane (LPG) 2 Piece



Gas Cutting Machines

Beetle Straight Line Cutters

- Beetle Straight Line Cutter Mk.1
- Beetle Straight Line Cutter Mk.2

TSG Beetle Track 1m

TSG Beetle Track 1.8m

TSG Beetle Circle Track

PRICE LIST
PAGE
12

PRICE LIST
PAGE
13

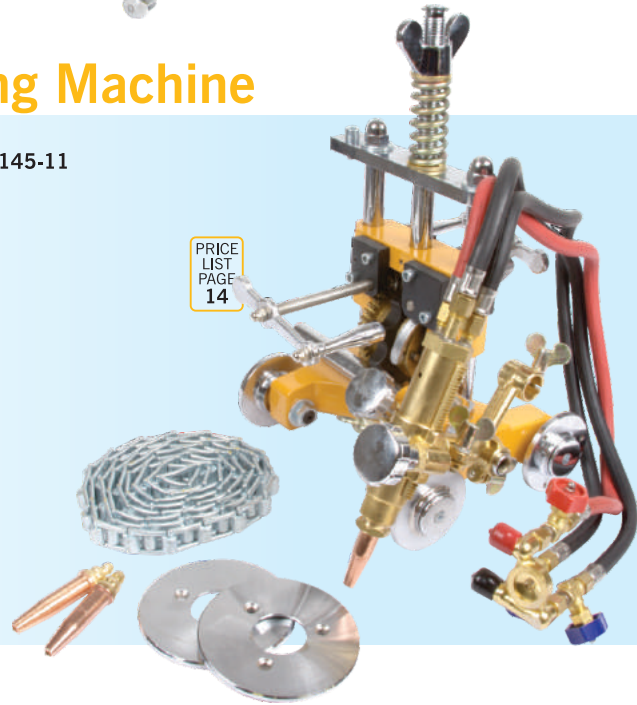
27

THERMAMAX Pipe Cutting Machine

- TSG Pipe Cutting Portable Fuel Gas Machine - Manual - 61-000145-11
- Victor VCM-200HS Machine W/Rig, Torch - 61-000150-11



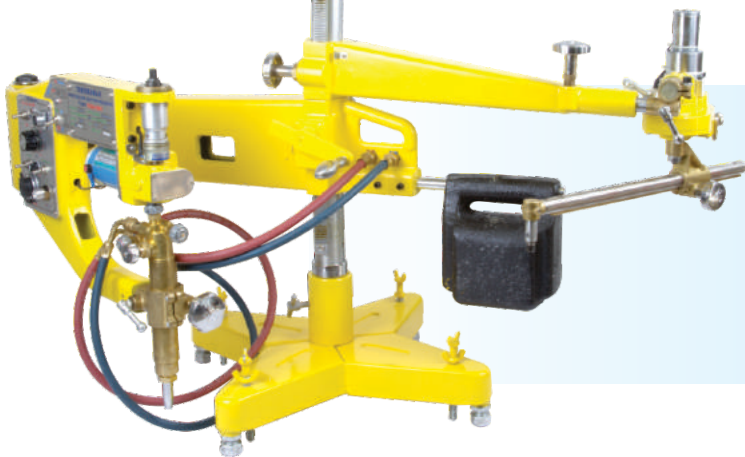
PRICE LIST
PAGE
14



Gas Profile Cutting Machines

- TSG CG2 180A Automatic Profile Gas Cutting Machine

PRICE LIST
PAGE
14



Thermal Lance

- Thermal lancing can cut ferrous and non ferrous steel and concrete
- Thermamax keep wire packed lances 6, 8 and 10mm for the earthmoving industry to remove pins and bolts
- Thermamax also keep wire packed lances 12,16,17 and 21mm lances for heavy industry for cutting of large diameter steel and concrete
- The hollow tubes are also available for acceleration in the melting process of steel
- Equipment and accessories available on request



PORTLAND CEMENT INSTITUTE OF SOUTH AFRICA (PCISA) APPENDIX A CONCRETE SOCIETY OF SOUTH AFRICA (CSSA) CODE OF PRACTICE
REF: 660/87/GRHG/bds/BOU 1 SABS TEST LLS/0001 MEMBER SABS 0157

Certificates available on request

Handi-Pak Gas Cutting Set



TSG Handi-pak Portable Professional Fuel Gas Kit

- Oxygen Gas Cylinder (Full) 2.60kg - ISO9809-2
- Acetylene Gas Cylinder (Full) 1.72kg - ISO9809-1
- Cylinder Trolley
- Aluminium Carry Case containing:
- 5m Oxygen & Acetylene Hose c/w ferrules and female nuts 1/4"
- Oxygen & Acetylene Regulators
- Torch Handles
- Cutting Attachment
- Torch Welding Mixer
- Torch Non-Return Valves - Oxy & Acet
- Regulator Flash Back Arrestors - Oxy & Acet
- No.1 & No.2 Welding Nozzles x 1 ea.
- AFN 1.2 & 1.6 Cutting Nozzles x 1 ea.
- Triple Flint Lighter
- Flip Front Brazing Goggles
- Torch Nozzle Cleaner Set

PRICE
LIST
PAGE
14

28

Welding & Cutting Outfits

TSG Kit - Deluxe Heavy Duty + Flash Back Arrestors For Regulators & Torch

*Special Note: All Outlet Fittings Standard 3/8" i.e. Fits Large Set

TSG Kit - Small Gas Kit For Thermamax Handi-Pak

*Special Note: All Outlet Fittings Standard 1/4"



PRICE
LIST
PAGE
24

supplied complete with carry case



Brazing & Soldering Rods

Bronze Brazing Rods

CCR

Silver Solders (Flux Coated & Bare)

Copper to Copper

PRICE
LIST
PAGE
38



Gas Welder's Accessories

- Nozzle Cleaner
- Spindle Key
- Triple Flint Lighters

PRICE
LIST
PAGE
24



Single & Double Cylinder Trolleys

PRICE
LIST
PAGE
28



Crossbow

Portable, Economical CNC Cutting Machine



- Lightweight and highly portable – easily transported as needed
- Best price/performance value
- Easy to learn, easy to operate
- Built-in library of 24 shapes for quick processing
- Equipped with plasma, oxy-fuel, or both
- 32MB memory storage with USB port for easy program loading
- Includes basic programming and nesting software
- Precision linear guide rails offer stability, accuracy
- Quick, easy manual positioning
- High performance rack and pinion drives
- Motorized torch lifter with 120 mm vertical stroke
- Arc Voltage Height Control for plasma cutting, including Ohmic Touch Initial Height Sensor
- Plasma torch plate-touch and crash sensing
- Automatic Kerf compensation
- Emergency stop button
- Heat shield



Portable CNC Cutting Solution

The Crossbow CNC cutting system offers high value at affordable cost in a portable, efficient design. Compact and lightweight, it is easily transported. A motorized lifter makes it quick and simple to adjust cutting height when oxy-fuel cutting, while Arc Voltage Height Control fully automates the plasma cutting process. The built-in CNC uses simple, menu-driven prompts yet delivers powerful nesting and cutting capabilities. An optional heavy-duty cutting table is available for fixed installations.

The Crossbow is ideal for trade schools, small fab shops, maintenance and repair shops, or for portable use within large facilities or at construction sites.

Process Options

The Crossbow can be equipped with an oxy-fuel cutting torch for cutting mild steel from 6 mm up to 80 mm thick, or a plasma cutting torch for up to 100 Amp cutting, which will handle mild steel or aluminum up to 20 mm thick, or stainless steel up to 15 mm thick. The machine can also be used with both plasma and oxy-fuel, and the two torches easily swapped as needed.

The machine comes standard with a motorized torch lifter which easily accommodate most oxy-fuel or plasma torches. The motorized lifter provides Arc Voltage Height Control capability, including an Ohmic sensor initial height system for fully automated plasma cutting. It also includes a solenoid valve for automatic control of cutting oxygen when using an oxy-fuel cutting torch. These features are standard with every machine, so adding either plasma or oxy-fuel in the future is never a problem.

Specifications

Crossbow	
Effective Cutting Width	1.550 mm
Effective Cutting Length	3.100 mm
Maximum Traverse Speed	3.000 mm/min
Overall Cross Bar Length	2.362 mm
Overall Track Length	4.000 mm
Overall Dimensions (CNC Drive Unit)	600 x 460 x 420 mm
Total Weight	150 kg
Input Voltage	220 VAC, 50/60 Hz



Easy to learn and operate



Origo™ Vac Cart

Plug and play portable weld fume extraction unit

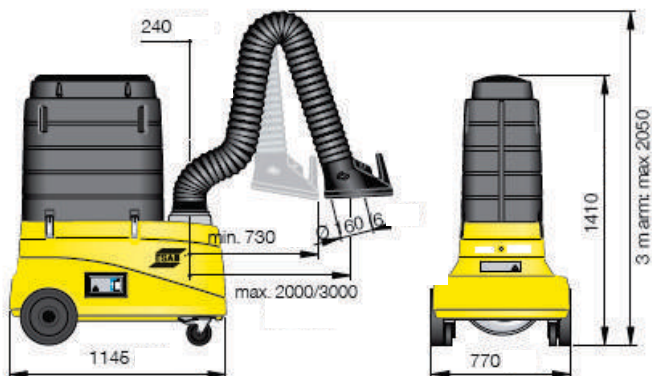
Origo™ Vac Carts are mobile fume extraction units for light/medium welding and extraction applications. They provide welders with a sound, safe and efficient welding environment whilst welding. Available in two versions, with or without light, these portable units are simple and easy to use.

Both versions are supplied complete with 3m extraction arms. The integrated spotlight, cart optimises the user-friendly design.

The 3m-extraction arm on both units have a diameter of 160mm and an extra large filter area of 35m² which equates to longer filter life.

Key Features

- 35 m2 extra large filter for longer life (up to a year)
- Lightweight and easily portable
- Large back wheels and lockable front swivel wheels – Outstanding mobility and safety
- True airflow measured in the hood with the 3m arm in a 45 degree angle.
- Easy to change filter – Can be replaced in minutes
- Easy to operate – Just plug in (1ph), turn on and go
- Filter provides 99% efficiency for welding fumes
- 6m power cable for increased mobility



mm
Horizontally swivelling arm

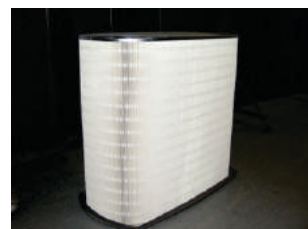


The Origo™ Vac cart efficiently captures all particles in the welding fume :

Chromium
Manganese
Copper
Zinc



Aluminium
Beryllium
Lead
Iron
And more..



Replacement filter



Simple operation on/off switch

THERMAMAX®

Cutting

plasma cutting machines & accessories

Plasma Cutting (APAC) Air Plasma ARC Cutting

THERMAMAX®

Plasma Cutters



220V

TSP Cut 40-B Plasma Inverter HF + Kit

■ 40A/220V

- Includes air regulator, water trap, A81 torch & earth clamp
- Input current range 10-40A
- Duty cycle 60% @ 40A
- Line input 14.45A
- Cutting size 6mm on mild steel - 3mm on stainless steel
- Air pressure 4-4.5 bar

 PRICE
LIST
PAGE
10


380V DC

TSP CUT 70-i Plasma Inverter HF + KIT

■ 70A/380V

- Includes air regulator, water trap, A81 torch & earth clamp
- Input current range 20-70A
- Duty cycle 60% @ 70A
- Line input 10.82A/Phase
- Cutting size 12mm on mild steel - 6mm on stainless steel
- Air pressure 4-4.5 bar

 PRICE
LIST
PAGE
10



PRICE
LIST
PAGE
11



Water Trap supplied with all Thermamax Plasma Machines

380V

TSP Cut 100-i Plasma Inverter HF + KIT

100A/380V

- Includes air regulator, water trap, A101 torch & earth clamp
- Input current range 20-100A
- Duty cycle 60% @ 100A
- Line input 15.46A/Phase
- Cutting size 18mm on mild steel - 12mm on stainless steel
- Air pressure 4.5-5.0 bar

32

380V

TSP Cut 120-i Plasma Inverter HF + KIT

120A/380V

- Includes air regulator, water trap, A141 torch & earth clamp
- Input current range 20-120A
- Duty cycle 60% @ 120A
- Line input 18.55A/Phase
- Cutting size 25mm on mild steel - 16mm on stainless steel
- Air pressure 4.5-5.0 bar

PRICE
LIST
PAGE
11



380V

TSP Cut 160-i Plasma Inverter HF + KIT

160A/380V

- Includes air regulator, water trap, A151 torch & earth clamp
- Input current range 20-160A
- Duty cycle 60% @ 160A
- Line input 24.73A/Phase
- Cutting size 35mm on mild steel - 25mm on stainless steel
- Air pressure 4.5-5.5 bar

PRICE
LIST
PAGE
11



PRICE
LIST
PAGE
11-12



Fitted with the SL60 & SL100 Torch

VICTOR
THERMAL DYNAMICS

- Victor Cutmaster® TRUE™ Series Plasma Cutters also available
- Heavy fabrication
- Manufacturing
- 4 year warranty power supply
- 1 year warranty torch

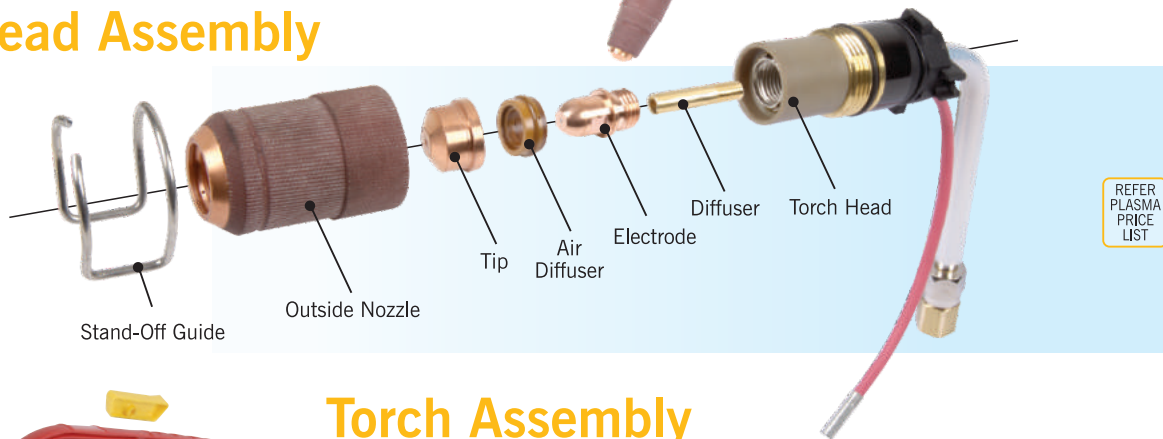
Plasma Torches & Accessories

Plasma Torches



33

Head Assembly



Torch Assembly



Automated Plasma Cutting available on request

- With the **Ultra-Cut XT** system's modular design, you can upgrade whenever the need arises, so you never have to worry about choosing the right system.





220V Disc Grinders & Die Grinder

730W - 115mm Angle Grinder



DWE4010

Power Input	730 Watts
No Load Speed	11000 rpm
Max. Disc Diameter	115 mm
Spindle Thread	M14

800W - 115mm Angle Grinder



DWE4050

Power Input	800 Watts
No Load Speed	12000 rpm
Max. Disc Diameter	115 mm
Spindle Thread	M14

1200W - 115mm Angle Grinder



DWE4212

Features Dead Man Switch

Power Input	1200 Watts
No Load Speed	11000 rpm
Max. Disc Diameter	115 mm
Spindle Thread	M14

900W - 125mm Angle Grinder



DWE4120

Features Dead Man Switch

Power Input	900 Watts
No Load Speed	11800 rpm
Max. Disc Diameter	125 mm
Spindle Thread	M14

2200W - 230mm Angle Grinder



DWE492

Power Input	2200 Watts
No Load Speed	6600 rpm
Max. Disc Diameter	230 mm
Spindle Thread	M14

400W - 40mm Die Grinder



DWE4887

Features Dead Man Switch

Power Input	400 Watts
No Load Speed	25000 rpm
Collet Size	6 mm
Weight	1.7 kg

220V Polisher, Cut Off Saw & Mag Drill Press

150mm & 180mm Variable Speed Polisher



DWP849X

Power Input	1250 Watts
No Load Speed	0-600/3500 rpm
Max. Disc Diameter	150 & 180 & 230 mm
Spindle Thread	M14

355mm - 701W Cut Off Saw



D28720

Power Input	2200 Watts
No Load Speed	3800 rpm
Wheel Diameter	355 mm
Metal cutting disc	Hex Key

2 Speed Magnetic Drill Press 50mm



DWE1622K

Power Input	1150 Watts
No Load Speed	350/650 rpm
Spindle Thread	1/2" x 20 UNF
Weight	13 kg

THERMAMAX® Discs

professional
grinding & cutting discs

Manufactured to German Safety Standards

THERMAMAX®

Resin Bonded Discs

Steel Cutting Discs



Thermamax Steel Cutting Wheels

- 115mm Inox Stainless Steel
- 230mm Inox Stainless Steel
- 115mm Steel
- 230mm Steel

PRICE
LIST
PAGE
48

Stainless Steel Cutting Disc 115 x 1.0mm also available

Steel Cut Off Discs

Thermamax Quality Steel Cut Off Wheels

- 355mm (3.5 x 25.4mm)
- 355mm (3.5 x 32.2mm)
- 400mm (4.0 x 25.4mm)
- 400mm (4.0 x 40.2mm)

PRICE
LIST
PAGE
48



Steel Grinding Discs



Thermamax Professional Angle Grinding Wheels

- 115mm Inox Stainless Steel
- 230mm Inox Stainless Steel
- 115mm Steel
- 230mm Steel

PRICE
LIST
PAGE
48

THERMAMAX® PPE

personal protection
equipment & welding accessories

36

Head & Eye Protection

Helmets

Full Range of Protective Head Gear

Adjustable & Non-adjustable Welding Helmets (Solar)

TruVision™ Adjustable
Solar Helmet



Passive Helmet



Lift Front Helmet



Non-Adjustable Solar Helmet

Full Leather Welding Helmet



- Lift Front Helmet
- Hand Shield
- Adjustable Solar Helmet
- Non-Adjustable Solar Helmet
- Passive Helmet
- Full Leather Welding Helmet

PRICE
LIST
PAGE
20

Welding Helmet with Built-in Air Supply



Head Gear

Safety Cap



PRICE
LIST
PAGE
16

PRICE
LIST
PAGE
17

Clear/Green Visor



PRICE
LIST
PAGE
20

- Safety Caps (all colours)
- Head Visor
- Skull Caps

Skull Cap



Eye Protection

Safety Spectacles (All Styles & Shades)



Clear/Green Goggles



PRICE
LIST
PAGE
17

Square/Round Goggles



- Safety Spectacles
- Safety Goggles
- Lift Front Goggles

Ear Protection

3M Ear Muffs & Plugs

- TSS Ear Muffs
- TSS Earplugs - Uncorded
- TSS Disposable Corded
- TSS Reusable Corded Ear Plugs

PRICE
LIST
PAGE
17



Ear Muffs



Ear Plugs
(Disposable)



Corded Ear Plugs
(Disposable)



Corded Ear Plugs
(Reusable)

37

Respiratory Protection Masks & Respirators

Thermamax Safety Disposable Respirator Products



PRICE
LIST
PAGE
18

- TSS Respirators
- SABS Homologation Approval
- Single & Double Respirators
- Full Facepiece Respirator
- Replacement Cartridges



Full Facepiece Respirator



Double Respirator



Single Respirator



Respirator Cartridges

Body & Hand Protection Leather Gear & Gloves

Chrome Leather Yoke



PRICE
LIST
PAGE
16



VIP Argon Gloves

Candy Striped Leather Gloves



Rubber Gloves

PRICE
LIST
PAGE
16

Chrome
Leather
Apron



Chrome
Leather
Spats



- Protective Leather Gear
- Standard & Heavy Duty Leather Gloves
- PVC Gloves
- Rubber Gloves
- Cotton Gloves



PVC Gloves



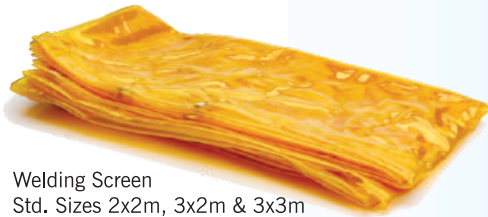
Heat Resistant Glove



Premier Welding Glove

Miscellaneous Accessories

Welding Screens & Thermo Ceram Cloth



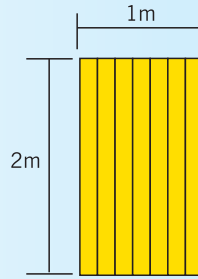
Welding Screen
Std. Sizes 2x2m, 3x2m & 3x3m

- Welding Screens
(made to size with or without eyelets)
- Welding Strip Curtains
(made to order)
- Thermo Ceram Cloth
(made up to size & sold / metre²)

PRICE
LIST
PAGE
22



Strip Curtains
Sold/metre (7 vertical strips/metre width)
Eyelets can be punched on request



For a 1m wide x 2m high
curtain order 14m of strip
(7 strips x 2m = 14m)



Ceram Cloth
Std. Size 2x2m

38

Welding Consumables

Silver Solder & Brazing Flux



PRICE
LIST
PAGE
43

- Solders & Fluxes
- Crack Detection products
- Anti-spatter products
- Pickling & Passivating products
- Markers and Temp Sticks

Developer/Cleaner & Penetrants



PRICE
LIST
PAGE
43

Silicone & Silicone Free
Anti-Spatter Sprays



PRICE
LIST
PAGE
43

Anti-Spatter

Pickling
Paste



PRICE
LIST
PAGE
43

Passivating
Liquid



Tempilstiks & Markal
Markers



PRICE
LIST
PAGE
44-45

Soapstone Contour
Markers



PRICE
LIST
PAGE
44



Sterilised Waste Rags

PRICE
LIST
PAGE
45

23A W.E.G Louw Street
Langenhovenpark
Bloemfontein, 9301
TEL: +27 51 446 0851
FAX: +27 86 268 1476
EMAIL stephen@hamisagroup.co.za



www.hamisagroup.co.za



HAMISA
GROUP
ENGINEERING & MINING

